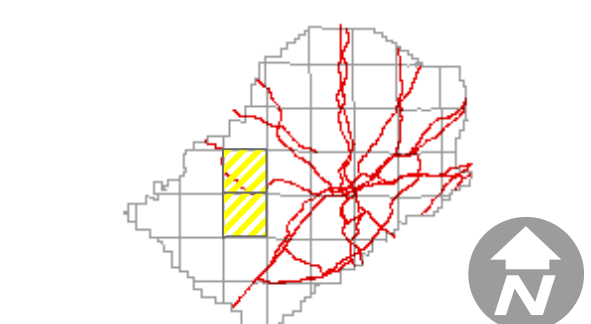


Sylvan Springs JCI3S Zoning

Sylvan Springs JCI3 Zoning

Official Zoning Map Town of Sylvan Springs, AL

Sylvan Springs Current Zoning					
	A1 - Agriculture		I2 - Heavy Industrial		R1 - Single Family
	C1 - Restricted Commercial		I3 - Mining & Manufacturing		R2 - Single Family
	C2 - General Commercial		I4 - Special Industrial & Manufacturing		RM - Single Family Mobile Home
	C3 - Special Commercial		INST - Institutional		RP - Planned Unit Development
	CEM - Cemetery		JCA1		RR - Rural Residential
	I1 - Light Industrial		JCI3		U1 - Utilities
			JCI3S		



This map has been prepared by Jefferson County Land Planning and Development Services. Any use of this map shall be at the sole risk of the person or entity using it. Jefferson County makes no warranty, expressed or implied, as to the accuracy of the information represented herein. This product shall not be construed as a contract. Any person, entity, or organization that relies on the product shall hold Jefferson County, its elected officials, employees and agents harmless from any claim, damage, loss, action, cause of action, or liability arising from the use of the map product.